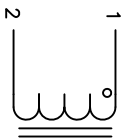




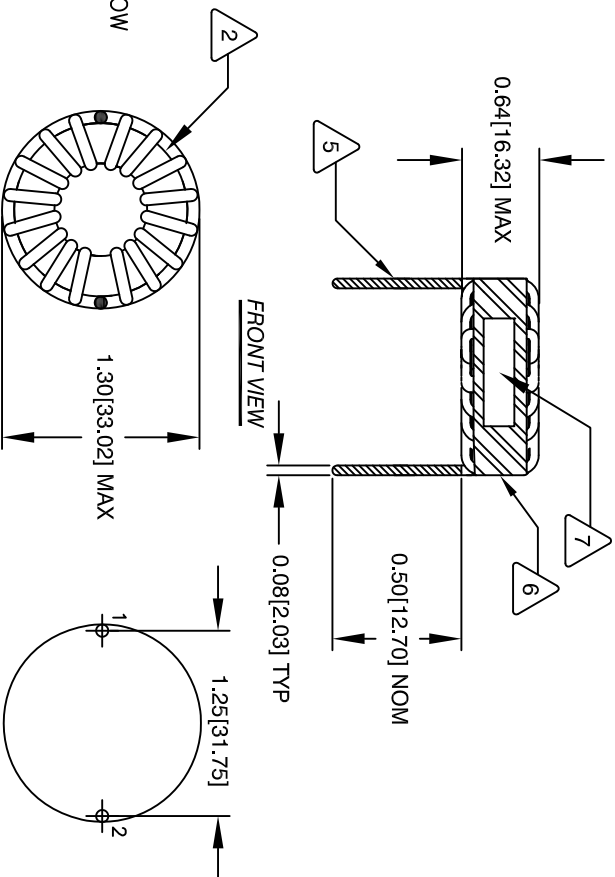
- 8 BUILD TO ROHS COMPLIANCE AND LEAD FREE
- 7 MARK PART NUMBER, REVISION AND DATE CODE
- 6 WRAP INDUCTOR WITH GLASS TAPE
- 5 FLUSH WITH THE COIL EDGE AS SHOWN
REMOVE INSULATION AND TIN LEADS

- 4 WIND COILS EVENLY SPACED AROUND THE CORE
CONSTRUCTION:
- WEIGHT: 35 GRAMS TYPICAL
HI-POT: WINDING TO CORE ISOLATION: 500VAC, 2mA, 2s
CURRENT RATING: 25 AMPS, 40°C TEMP. RISE WITH SOME AIRFLOW
INTERWINDING CAPACITANCE = 12.3pF TYP @ SRF
|Z| = 126 OHMS TYP. @ SRF
SRF: >10MHz TYPICAL
DCR = 4.0 MILLI-OHMS MAX
OPERATING TEMP. RANGE: -40°C TO 155°C
INDUCTANCE WITH DC BIAS : SEE TABLE ON THE RIGHT
INDUCTANCE = 20uH ±15% @ 0 ADC, 1 KHz, 250mV
SPECIFICATIONS @ 25°C:

- 2 WIRE: UL RECOGNIZED 200°C RATED MAGNET WIRE
CORE: TOROIDAL POWDER CORE
RATING CLASS H (180°C MIN.) REQUIRED
MATERIAL: UL RECOGNIZED 94V-0 FOR FLAMMABILITY
- 1 ANY TOLERANCE. THIS DIM. CAN VARY A LITTLE FROM PART TO PART.
"TYP" IN DIM. TABLE REFERS TO A NON-CRITICAL TYPICAL (AVERAGE) DIM. WITHOUT
NOTES: UNLESS OTHERWISE STATED, READ NOTES FROM BOTTOM UP.
CAGE CODE: 5DME2



SCHEMATIC



DC BIAS TABLE	
DC Bias (Amp)	L@1KHz (REF)
0	20
5	18
10	17
15	15
20	14
25	12

REVISION HISTORY				
REV	ECN	DESCRIPTION	SIGN & DATE	
			BY	DATE
B		UPDATED MOUNTING HOLE WIDTH	TN	03/03/2020
B1		UPDATED SPEC.	TN	09/14/2020

CODE	IDENT	MFG. P/N	DESCRIPTION	ITEM NO.
PARTS LIST				
AUTOCAD				
SOLIDWORKS				
SIGN				
DATE				
DRAWN				
TN				
10/31/18				
CHECKED				
JM				
10/31/18				
ENGR.				
JL				
10/31/18				
APPR.				
JL				
10/31/18				
DO NOT SCALE DRAWING				

UNLESS OTHERWISE SPECIFIED	
DIMENSIONING AND TOLERANCE PER ANSI Y14.5M AND [MILLIMETERS]	
TOLERANCE INCHES: .XXX=±.005 .XX=±.015 .X=±.030	
TOLERANCE METRICS: .XXX=±.127 .XX=±.254 .X=±.508	
ANGLE PROJECTION	
DO NOT SCALE DRAWING	